

CABIN RENTAL INFORMATION

Visitors to PEEC are welcome to inquire about renting a cabin if one is available. We request that you contact us 3 weeks in advance to check availability. Last minute reservations are rarely available.

Cabin types range from our 1950's cabins to our yurts, lodges, and duplexes. There are **no kitchen facilities**, but all cabins include heat, electricity, indoor bathroom facilities, and mini-fridges with microwaves. All cabins have bunk beds or twin beds. You must bring your own sheets, pillows, and personal toiletries.

Minimum 2-night stay

Prices:

Cabin Rental Rate \$150.00 per cabin, per night

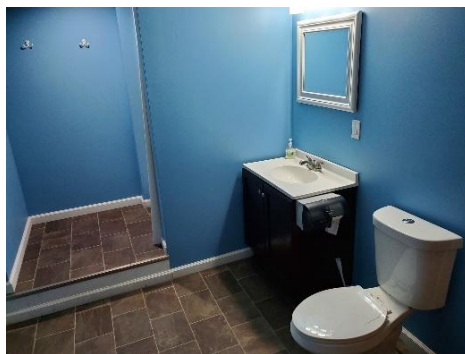
Programs: We offer a variety of public programs on the weekends throughout the year. Get out our calendar to see what we have coming up! Separate program rates will apply

Pets: Animals are welcome on our campus (leash required, and please pick up after your pet), but are not allowed inside any of the buildings. Only service animals are allowed in our buildings.

Campfires: Due to national park regulations, all campfires must be scheduled in advance and attended by a PEEC staff member in one of our designated fire rings- an additional fee of \$90 applies.

Check-in/out Time: The cabins will be available starting at 3pm. Please check-in at the main office to receive your cabin key, campus map, and to finalize any remaining payment. Special arrangements can be made for those that plan to arrive after our normal business hours. Check-out time is at approximately 10am on departure day.

Here is what your cabin could look like!



**Payment can be in the form of credit card, cash, or check.
Full, non-refundable payment is due when reservation is made.**

Pocono Environmental Education Center

538 Emery Road, Dingmans Ferry, PA 18328

www.peec.org • peec@peec.org • 570-828-2319