

2011-2012

Annual Report



PEEC

**Pocono Environmental
Education Center**

Celebrating 40 Years

OF QUALITY ENVIRONMENTAL EDUCATION IN THE DELAWARE WATER GAP NATIONAL RECREATION AREA

PEEC Board of Trustees



2011 OFFICERS

Dr. Barbara Brummer - Chairperson
Anthony Vallese - Vice-Chairperson
Liz Kirkwood - Secretary
George Hill - Treasurer

TRUSTEES

Carolyn Bolt
Erica Cullman
Helen Conover
Eric Hamill
Jan Lokuta, Esq.
Brian O'Hare
Richard Lindsay
Dr. Howard Whidden

2012 OFFICERS

Dr. Barbara Brummer - Chairperson
Anthony Vallese - Vice-Chairperson
Liz Kirkwood - Secretary
George Hill - Treasurer

TRUSTEES

Erica Cullman
Helen Conover
Eric Hamill
Brian O'Hare
Richard Lindsay
Dr. Howard Whidden

EMERITUS

Dr. Harry Miller, Jr.
John (Jack) Padalino
Dr. Calvin Stillman

IN MEMORIAM

Dr. Paul F. Brandwein
J. Thomas Seely
Dr. S. Marie Kuhn

"The joy of watching people engage and appreciate nature in this most intimate way at PEEC is inspiring and contagious."

Barbara Brummer, Ph.D., Chairperson

FORTY YEARS OF ENVIRONMENTAL EDUCATION AND LEADERSHIP

In 1972 a formal partnership between Keystone College and the National Park Service was initiated and the Pocono Environmental Education Center was born. Fourteen years later (1986) a group of 8 founding trustees formed the Board of Directors that would lead this organization with a goal to help teach the importance of conservation and environmental stewardship. Our vision is simple. We look forward to and strive for: "An Environmentally Enlightened World".

The vision of our founding trustees (seven men and one woman who was way ahead of her time) endures and is even more resonant in today's world. We salute our champions of conservation and we admire those before them that inspired the environmental movement. Conservation Giants like: John Muir; Gifford Pinchot, Aldo Leopold and Rachel Carson inspired us all to protect the environment from the impacts human activities. Our job now is to carry on in "teaching" the importance of stewardship for our planet.

Forty years of environmental leadership – PEEC is a model to be admired. For all those who have participated in PEEC programs, you know what we mean. It is an enduring concept with measurable results in the faces of our enthusiastic staff and most of all – the children that enjoy their experience in our outdoor classroom. Never has the need for environmental education been greater; let us continue the journey and spread the message for 'An Environmentally Enlightened World'.

A handwritten signature in black ink, appearing to read 'Barbara Brummer'.

Barbara Brummer, Chairperson
PEEC Board of Trustees

"I love being around nature and breathing fresh air."

~ Student, Malcom X Shabazz High School, Newark, New Jersey

Overview and Program Highlights

Over the past 15 years, my three children have grown up with PEEC as a vital part of their lives. It has influenced who they are and what they hope to do with their futures. From my 17 year old daughter and her friend Emily (who she met on a PEEC hike at age 4) confidently running Tumbling Waters Trail to look for lost hikers, to my 16 year old son helping to extract a dead bear from the woods for an EcoZone exhibit, to my youngest son winning mud camo at summer camp and then teaching as a counselor; PEEC has made their lives fuller. They learned by being steeped in the wonder that is PEEC and the beautiful national park in which it is located. At the end of every day, they took a little bit of PEEC home with them, with their dirty hands and muddy clothes and in the guidance and teaching from the amazing PEEC educational staff.

After 40 years, PEEC's mission and methodology of experiential learning are just as relevant, perhaps even more so. Mobile electronic devices in this century, like the manufacturing revolution of the mid-twentieth century, have served to disconnect people from nature and the sources of the food and water that sustain us. My suggestion for the next forty years is to coop the technology to enhance the learning process, rather than to fight it. A single mobile device can carry every field guide in PEEC's library— what an amazing educational tool. The key is to know when to turn it off and put it down, just to listen and to observe. The natural world is already fascinating and exciting; we need to guide students to see it, to understand it and to want to sustain it. At its core, PEEC is charged with not just educating the next generation of environmentalists, but the next generation of concerned, informed and enlightened citizens.

Recently, we led a group of high school students, who had never before been in a canoe, on an expedition down the Delaware River. Afterward, one of the young women remarked that she reveled in the fact that we “trusted her enough to be in charge of her own destiny.” I realized that is all my three teenage children want. Ultimately, isn't that what all children want as they mature into adults? PEEC provides exploration, context and guidance for tens of thousands of students each year and prepares them to be in charge of their own destiny.



Jeff Rosalsky, CEO

A handwritten signature of Jeff Rosalsky in black ink.

Jeff Rosalsky
CEO

I wish I could stay for a few more days.”

~ Student, Malcom X Shabazz High School, Newark, New Jersey

2012

PEEC People



2011-2012 MANAGEMENT TEAM

Executive Director - Jeff Rosalsky
Director of Development - Flo Mauro
Director of Business Mgmt. - Mariann Oswald
Facilities Manager - Ted Wetzel

PEEC PEOPLE

Director for Education - Allison Owczarczak
Associate Director for Education
Program Planning, Weekend Operations & Outreach – Heidi Normand (2011)
Director of Group Program Business Development- Sheri Bone
Programming Planner - Kristen Heckrote
Naturalist/Workshop Manager - Molly Check
Camp/Volunteer/Special Events Manager - Jessica Snyder
Dining Hall Manager - Wendy Gannon
Public Relations/Marketing - Janine Morley
Receptionist - Barbara Derrenbacher

INSTRUCTORS & INTERNS

Will Rode, Hannah Taylor, Barbara DeBenedictus, Amy Hobbs, James Maloney, Ryan McLaughlin, Ann Streb, Heather Wuerther, Josh Horning, Jaclyn Bealer, Susan Brudi, Erin Reed, Laura DeWolff, Glen Simpson, Garrett Tetley, Nicole Davidson, Alyssa Tomaskovic, Charming Yu, Susan Yorks, Janet Famularo, Jason Anspach, Lea Della Vecchia, Bridget Gross, Safia Sabir, Mark Gardner
VIP's (Volunteers in PEEC) Extraordinaire
Lou Wentzler — Groundskeeper
Carolyn Shuttleworth — Master Gardener
Larry Martone — Mr. Fix It, EcoZone! Bear Builder and Waterfall Maker

NEW MISSION, NEW ADDRESS, NEW LOGO & LETTERHEAD AND A RENEWED VISION

PEEC Trustees and staff spent a deal of time working on updating our mission, renewing our vision and with help from the Niki Jones Agency, designing and establishing our new logo and letterhead. And, PEEC now has a 'real' address!

Mission: the Pocono environmental Education Center (P.E.E.C.) advances environmental education, sustainable living, and appreciation for nature through hands-on experience in a national park.

Vision: "An Environmentally Enlightened World".



Pocono Environmental Education Center
538 Emery Rd.
Dingmans Ferry, PA 18328

"Wow! I can't believe we saw a real bald eagle!"

~Student, Washington Irving High School

Development Updates

GRANT FUNDING

	2011	2012
Geraldine R. Dodge	\$15,000	\$15,000
ESSA Bank & Trust	\$57,800*	
Nat'l Park Foundation 1st Bloom Project	\$6,700	
Nat'l Park Foundation/America's Best Ideas	\$15,000	\$15,000
Nat'l Park Foundation Impact Grant		\$10,000
Nat'l Environmental Education Foundation		\$5,000
Nat'l Speological Association	\$1,000*	
Nat'l Speological Society	\$1,000*	
Litzenberger Family Foundation	\$15,000*	\$5,000
Biondo Family Foundation	\$10,000	\$12,000
Harry & Jeanette Weinberg Foundation	\$50,000	\$60,000
Price Chopper Golub Foundation		\$1,000
Constellation Energy/Exelon	\$5,000	\$4,500
Outdoor Nation	\$5,000	
Best Buy	\$5,000	
Wal-Mart	\$500	
Berkowitz II Foundation		\$500
GA Stetson Middle School		\$2,000*
Sanofi-Pasteur	\$10,000	
PP & L- PA Power & Light	\$5,000	\$5,000
Dime Bank	\$5,000	\$5,000
Pocono Arts Council	\$762*	\$485
PA Dept Environmental Protection	\$7,776	
ANNUAL SUPPORT	\$34,953	\$28,500
Membership, Contributions, Golf Outing, Fundraisers		
TOTAL	\$174,929	\$166,985

*EcoZone! construction projects

**PA Dept. Conservation & Nat. Resources

project pending PEEC lower campus upgrades



“Wow, the dragonfly nymph has a funky appendage!”

~Student, Friends School Mullica Hill, New Jersey

2012

Take a PEEC!



EcoZone!

After years of planning, working, building, and painting, at 5:00pm on Saturday, November 19, 2011 the doors to the EcoZone! were opened for the first time. That evening over 80 invited donors & supporters arrived to explore & discover. EcoZone! then opened to the public and since then, several thousand students, visitors and guests have built the bear skeleton, crawled through the bat cave, sat in the eagle's nest, followed the fish-poo, and visited with our native snakes "Garrett", "Salazar", and "Squiggles".



Growing Green Summer Resident Camp

Since its inception in 2009 as a 2 week day camp for 20 campers, Growing Green (GG) has grown and flourished into a thriving 5 week summer resident camp for children and young adults (and their families) with special needs. PEEC and its partner in the program, Easter Seals (ES) served over 125 campers and family members in 2011 and 150 in 2012.



WOW - Women on the Water

In its 2nd and 3rd seasons, is an experiential education program focused on building excitement and engagement in young women for the natural world, the Delaware Water Gap National Recreation Area (DWGNRA) and its neighboring public lands, has served over 100 female high school students from urban Philadelphia, New York, Newark and Wilmington DE.



Forest to Faucet

In 2011 PEEC hosted an Educator Workshop sponsored by The Nature Conservancy and Johnson & Johnson. Twenty five teachers and environmental educators from New Jersey and Pennsylvania attended the workshop to learn and gather information and activities to teach to middle school students how healthy forests affect the quality of water.



PEEC ALUMNI Give Back

Ten former PEEC staff members or as they refer to themselves, 'PEEC's fossilized interns' came back Labor Day Weekend, 2012, to help with a few projects, engage in many 'remember whens', renew friendships, hike TV, do a bit of birding, and marvel on how far PEEC has come. Les "Buzz" Gamble (PEEC 1978-85) orchestrated the project and the course of one weekend they totally re-built the boardwalk on the Two Ponds Trail.

"This was way more fun than I expected. And we were able to bond." ~Student, Washington Irving High School



Bio Blitz Touch-screen Exhibit

During the September 2010 Bio Blitz, PEEC and DWGNRA staff and volunteers collected data and photographed over 3,000 individual species of flora and fauna located throughout the Park. Thanks in part to a grant from the National Park Foundation, visitors can now access the Bio Blitz data through an interactive, touch screen exhibit at PEEC and also on-line before, during, and after a visit to PEEC and the National Recreation Area.

Stem to Steam

In 2012 PEEC hosted the first of three "Patterns in Nature: Teachers and Artists Training Educators How to Integrate Art into STEM" workshops for students, teachers, and artists from New Jersey to create strategies for educators to use to integrate arts into STEM subjects in New Jersey schools.



HIGH ANGLE Rescue

In 2012, PEEC and Delaware Water Gap National Recreation Area hosted a Basic Technical Rescue Training workshop for National Park Service (NPS) staff and partners. Each year, NPS holds two week-long classes to train employees and partners in the skills needed to safely execute technical rescues. PEEC's Education Director, Allison Owczarckak, took part in the workshop and is a member of the local rescue team!

QUEST Diagnostics Volunteers

PEEC hosted Quest Diagnostics of New Jersey and Pennsylvania for their first volunteer day at PEEC. 65 volunteers from their IT department accomplished many major items on PEEC's "most wanted" list including; renovating 2 cabins, exterior scraping of 6 cabins, cleaning and prepping the Yurt Village, renovations in Classroom #2, re-building the seats in the Amphitheater and lots and lots of landscaping.



MCTI-Monroe Career & Technical Institute

MCTI, an extension of Monroe County PA's four school districts which provides tuition-free career and technical education for secondary students, has partnered with PEEC to assist in our cabin renovations. MCTI students, under the guidance of their instructors, are 'renovating' the interiors of several Honeymoon Haven cabins. Benefits include on-the-job training for the students and a job well-done for PEEC.

"Never walked so much in my life but it was fun."

~ Student, Washington Irving High School

2012

Operations/Physical Plant Updates



Cabins

- Completed renovations to interiors of Cabins #2, 3 and 7
- Began renovations to the Interior of Cabin #0
- Cabins #18, 19, 20, 40, 41, 42, 48, 49 and 51 were demolished
- Took out rugs and painted floors cabins 43, 44, and 45, 46, 50, 52, replaced paneling and painted interior walls
- Installed new, more energy efficient flooring in staff cabin
- Painted outside of all the cabins

Main Building

- Installed heating system in the EcoZone!
- Insulated and sided the rear exterior
- Installed and wired Front Office for generator
- Installed new heat/air conditioner unit the Back Office
- Installed new gas hot water heaters in the Display and Carpet areas

Dining Hall

- Installed the second generator
- Established the 'rain gardens' to collect rain water/snow melt run-off from roof 'scuppers'.

Campus

- Established the Canoe Garden adjacent to the Main building-using outdated, leaky canoes from local liveries as the raised beds for growing herbs and veggies
- Removed the old and rebuilt boardwalk to the bird blind
- Rebuilt amphitheater seats and benches

“I don’t want to go home today.”

~ Student, Elysian Charter School, Hoboken, New Jersey

Audubon Print

Audubon Print Donation Highlights PEEC's 40th Anniversary-over 150 people attended the celebration. The event was held in conjunction with PEEC's Annual Game Dinner. Jack Padalino, PEEC's First executive Director, spoke about the significance of PEEC's history and the fact that PEEC is still here, stronger than ever. Jack noted that PEEC founder Dr. Marie Kuhnen (1917-2009) was singularly instrumental in making the center what it is. Describing Marie's positive influence on much of the staff, including himself, Jack then donated an original Audubon print, 'Redtailed Hawk' from the Amsterdam Edition of Audubon's Birds of America in honor of his life time friend, mentor, and colleague. The print is on permanent display at PEEC.



“Adrenaline...nature’s coffee.”

~ Student, Belmont Charter School, Philadelphia, Pennsylvania

2012

Education Updates



- Allison Owczarczak promoted to become Director of Education.
- Sheri Bone was named Director of Group Program Business Development.
- Molly Check named Public Program Manager/Volunteer Coordinator.
- Jessica Snyder named Summer Camp Director/Special Events Coordinator.
- Enhanced staff training programs for all PEEC employees with new sessions on Child Abuse Awareness, Wilderness First Aid and Adapting Outdoor Programs to serve special needs populations.
- Hosted 1st and 2nd Annual Harvest Fest events
- Continued Road Scholar programs for seniors
- Opened the EcoZone! and Bio Blitz Exhibits
- Instituted weekly late night cook-outs, river trips, climbing adventures and 2-day Appalachian Trail hikes for PEEC's Junior and Senior Naturalist Day Campers.
- With the Delaware Water Gap National Recreation Area, hosted WOW II and III (Women on the Water).
- In partnership with the National Park Service and sponsored by the George Wright Society, hosted the Park Break program for a group of Ph.D. and Masters students from across the country to create a sustainability curriculum for us.
- With Easter Seals, hosted the 2nd and 3rd Growing Green Summer Resident Camp Program for children and young adults with special needs.
- With Growing Green, PEEC received accreditation by the American Camping Association (ACA).
- Served (an average) 24,000 visitors including: school students PreK-12 and higher, educators, scouts, youth groups, families, birders, hikers, photographers, gardeners, special interest groups, and more.
- 300+ volunteers contributed over 5,000 hours of service for PEEC.
- Continued to publish assessments and evaluations input from participants.
- PEEC now has a Facebook page (<http://www.facebook.com/pages/Pocono-Environmental-Education-Center/48733335833>) and a Twitter account (peec_tweet).

“Wow, that is a big spider!”

~ Student, Borough School, Morris Plains, New Jersey

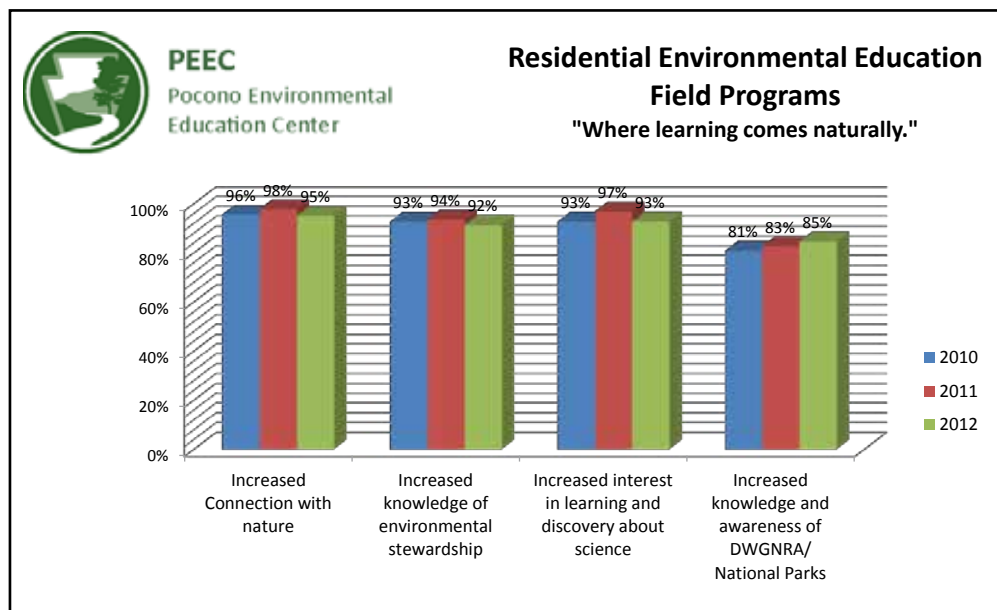
PEEC's Program Assessments

At PEEC we have always known the benefits of taking people outdoors to learn and play. We believe that through 'direct experience' with the natural world, PEEC participants will:

- Gain increased knowledge of natural science, techniques for scientific inquiry and familiarity with local flora, fauna, and ecology;
- Become connected to their natural world;
- Become actively involved in environmental concerns, conservation, and stewardship.
- Become aware of and familiar with the natural, cultural, historical, and recreational opportunities available to them in the Delaware Water Gap National Recreation Area;

In 2011 and 2012 PEEC Executive Director Jeff Rosalsky and staff aggressively pursued and tracked written (and verbal) assessments from more user groups including both formal and non-formal programs and services.

Here is an 'accounting' of our visitors' assessments:



Source: Based on PEEC evaluations representing

3112 participants as of 2010

1957 participants as of 2011

2364 participants as of 2012

STUDENTS IN THEIR OWN WORDS:

"They developed more of a sense of stewardship over the three days."

"Let's go to bed early, because I have to get up early and i don't want to miss a single thing. I may never get to experience this again."

"There aren't this many stars in Brooklyn."

"At PEEC we learned how to save or destroy our environment."

"OOO" on hearing rustling of bear cubs.

"This is awesome, I love PEEC."

"They don't do anything here for you, I got to do everything here!"

"Miss, do we REALLY have to go back?"

~ Student, Washington Irving High School

2012



PEEC SUPPORTERS

2011-2012

BALD EAGLE



Harry and Jeanette Weinberg Foundation
ESSA Bank & Trust
Tom and Barbara Brummer Family
Litzenberger Family Foundation
Biondo Family Foundation
AM SKIER
DIME Bank Dingmans Ferry
The National Parks Foundation
PA Department of Environmental Protection
Marcia Kaplan Mann

PA Department of Conservation &
Natural Resources
Ronald McDonald Charities
Geraldine R. Dodge Foundation
Outdoor Nation
Constellation Energy
GA Stetson Middle School
Sanofi-Pasteur
Best Buy

PA Power & Light
Nikijones Agency
Vanessa Abramson
George Hill
Richard Lindsey
PPL Electric Utilities
Allison Taylor
Lou Wentzler
Daniel White

RED SHOULDERED HAWK



Skytop Lodge
TRACO Embroidery
Anthony Vallesse Family
Heather Chadwick & Flo Mauro
Pocono Arts Council
Price Chopper-Golub Foundation
National Speological Association

National Speological Society
Wal Mart Westfall
Berkowitz II Foundation
Vicki Brown
Pete & Barbara Derrenbacher
John Hambrose

Peter Kirkwood
Kirsten Larick
David J. Milberg
Kathy Oehlmann
Mariann Oswald
Gary & Czashka Ross-Roth

BLUE HERON



Dingmans Bridge
Chris & Karen James
Brian & Kathy O'Hare
B & K Tax Service
Lorraine & Skip Gregory
The Waterwheel Cafe
The Gem & Keystone

Peter's Valley
Ross Family Foundation
Ann Frye
Michele Hansen
Robert Keniston
Jeannette Miller
Sonda Miller

Judie Rosborough & Family
Paul & Carolyn Shuttleworth
Elaine Smithson
Richard Snyder
Lynn Zahner

SCARLET Tanager



Scott Cross
Doris & Tom Dodd
Kathy & Kurt Brink
Dennis & Marilyn Dondero
John & Jeanette Dondero
Peter Geffert
Jim Gehris
Dawn Kendall
Joe LaVelle
Doug & Penny Luhrs
Margaret Mauro
Bill May
Sandy Miller
Bill Montgomery
Patricia Moore
Jeff Natale
John Norton
Brian Reilly
Richie Roche
Penny Wise Fuel
One Point Print
Prime Time Meats
Sterling Reiss
PA State Rep. Rosemary Brown
Bob Steine
Bonnie Rodriguez
Paul Simmons Realty
Joan VWolf
Greg & Trish Woznick
Single Shot Rifles
Diane Spencer
Strunk Albert Engineering
Laura Jo Colla
Camille Lore

Joyce Helms
Don Hinkel
Doug Hobby
Nick Iwanisiw
Bob Newmark
Barry Weinbrom
Petrizzo's
Sherwin Williams
Karol Sundheim
Linda Aumick
SYSCO Foods
US Foods
Two Saps Maple Syrup
WRENCHES Auto
Zaleski Optical Gallery
5 Guys Burgers & Fries
High Point Country Club
Great Bear Golf & Country Club
Crystal Springs Golf Club
The Lynx at River Bend
Hideaway Hills Golf
Mt. Manor Golf
Shawnee Golf & Inn
Woodloch Resort
Erhardt's
Dimmick Inn & Steakhouse
Mt. Haven
Good Time Pizza
Kittatiny Canoes
Random House
Craig Hansen, Aflac
Linda Fields
Cirello Family
Henry & Lola Weber

Jim & Lee Amigh
Naomi & Ron Anafi
Roy Arezzo
Raul Arrazcaeta
Katrina Barnas
Edward and Maria Barnas
Joseph and Sara Bedrick
Kristen Berge
Heidi Berman
Betty Lee Bingnear
Laurel Bishow
Wayne Bolt
David Brown
Jennifer Campea
Janet A. Carter
Louise U. Check
Rachel Check
Annmarie Conte
Tracy and Peter Cook
Margaret & Winston Crawley
Erica & Steve Cullmann
Cynthia D'Ambrosio
Paula DeLucco
Andrew Desko
Steven Fassler
Michael Feller
Amy Ferris
Barbara Frazier
Robert/Beth Frederick
Christopher Gaddess
Caroline Gainer
Kathleen Gilbert
Deborah Glass
Daniel Gluck

AI-DANA Construction
All State Septic
Dingmans Ferry Stone
D & S Hauling
Fowler Oil
Hampton Inn Matamoras
HOVUS, Inc.
Independence True Value
Nick & Judy Jecko
Helen Conover
Mander Fire & Safety
McGrail, Merkel & Quinn
Milford Journal
Ed Nikles Realty
Bill Beckman Jr.
Bill Beckman III
Kevin Burke
Peter Byrne
Mark Cole

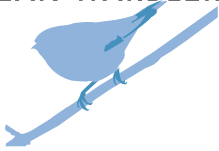
CONTINUED...

Arthur Goldberg
Randolph Gregory
George Hajek
Dr. Susan Halsey
Eric Hamill
Jean & Thomas Hoff
Tracy Keanna
Ernst Kohlstruk
Stephanie Kollar
Thomas & Karen Kontizas
Pilar and Franz Lehnkuhler
Jean G. Littlefield
Ellyn Mansfield
John Martello

Shawn McLaughlin
Dave Miller
Anne Montgomery
Philip Munkacsy
Robert Newmark
Tanya Oznovich
Anne Palmer
Howard Parish
Phillips-McGraw Family
Pocono Mountain Visitors Bureau
Louis and Denise Pol
Anita Ray
Nancy J. Roberts

Elaine Rogers
Jeff Rosalsky Family
Sheila Salmon
William Scarpa
Gretchen Schmelz
Robert Scott
Anne Steinberg
Dr. & Mrs. Franklin Strong
Maleyne Syracuse
Thompson-Gunter Family
Anne Troop
Laraine Ward
Gail Wershing

CERULEAN WARBLER

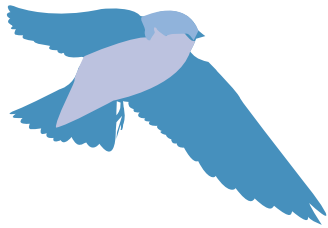


Derry Bird
Johanna & Max Brinson
Desserra Ewing
Charles & Diane Fancher
Susan Fine-Bartolomey

Paul Gamer
Dorothy Grecco
David Hammer
Dan & Liz Hendey
Howard & Cynthia Huttner

Howard Hyde
Abby Meade
Brienne Phillips
Ms. Neville Strumpf

TREE SWALLOW



Gore Family
Lawrence Alfano
Carla Beasley
Jerome Bodkin
Mrs. Andrew T. Boggs
Gordon and Delores Brooks
Chris Brooks
Don & Chris Burton
Samuel and Kathy Carswell
Brian Fake
Famularo Family
Chris & Ronnie Fischer
Les Gamble
Ray Garner
David M. Goldberg
Lisa Golubiewski
Gottschall - James Family
Marcia Guberman
Christine Herz
Michael & Beth Hess
Melissa Hillmann
Nikolaj Hines

Allan Hoffman
Ken Horen
Robert & Ann Carol Karotko
Grace Karschner
Shirley Keinath
Rick & Kate Kendalls
Sylvia Kleff
James Kolter
Harry Kranepool
Rita Lee
Mike Liese
Jessica Lukach
Sharon Maloney
Larry Martone
Claire Mazan
Charles E. McCarthy
Karen Medina
Elizabeth Mindlin
Kevin Morley
Mark Orpen
Margaret Parlapiano
Philip & Sima Paskowitz

Lois & David Prytherch
Don & Ann Raley
Robert Remillard
Susan Ridyard
Steve & Jen Schoonover
Wendy Schwalb
Patricia Shreiner
Lindsey Smith
Susan & Philip Stevenson
Marian Stewart
Patricia Thrapp
Arlene Tishuk
Chris & Greg Turn
Stephan van de Loecht
Melanie Weiss
Kim Williams
Solvejg Wills
Julie & Andrew Wilshinsky
Peter Wulfhorst

EASTERN PHOEBE



Judith Adelson
Paul Berge
Arline & Albert J. Bonadonna
Adele Breikreitz
Tom Brown
Brenna H. Bry, Ph.D.
Dr. Janet Calhoon
Lisa Caporaso
Brenda Carbone
Jeffery Chapman
Robert Confer
Jen Cullin
Don Epstein
Barbara Fern
Judy Fitzpatrick
Diane Gallo
Beverly Gordon
Stephanie Gray Steed

Jeffrey Hardy
Florence C. Higgins
Joseph Paul Horning
Sue Keppel
Marianne Kleyla
Carol M. Lizell
Lars Loercher
Theresa M. Loughney
Bernard Loyal
Janet Martin
Marion Martus
Jim Montgomery
Heidi Normand
Carol Norr
Kurt & Edith Osinsky
Kate Palermo
Robert Palmer
Connie Pascale

Joy Reichelt
H.G. Ripple
Charles & Harriett Riter
Kevin & Karen Robbins
Martin & Suzanne Rudzin
Lester Schoenewald
Linda Shay
Mathilda Sheptak
Beth Skufca
Lois & Jerry Snyder
Patricia Swoyer-Salber
Kathleen Thomas
Justin Timmers
Pamela Townsend
Edward Trush
Rose Ann Whitesell
Elizabeth Zapp

Financial Reports



Revenue, gains and other support:

	2011	2012
Instructional fees	\$ 995,673	\$1,006,131
State grants	246,726	175,078
Private gifts and grants	—	—
Contributions	34,953	56,962
Rentals	26,140	12,282
Gain (loss) on sale equipment	7,850	—
Miscellaneous	3,700	8,393
Fundraising	14,662	16,848
Investment income	1,196	1,979
Net unrealized (loss) gain on investments	—	—
Gift shop	13,037	9,228
Other income	28,201	—

Total revenue, gains and other support	1,372,138	1,286,901
---	------------------	------------------

Expenses

Instructional	1,074,833	1,117,752
Management and general	274,629	253,783
Development and fundraising	49,201	52,396

Total expenses	1,398,663	1,423,931
-----------------------	------------------	------------------

(Decrease) Increase in net assets from operations	(26,525)	(137,030)
---	----------	-----------

Net assets, beginning of year, as previously reported	529,237	502,712
---	---------	---------

Net assets, ending	\$ 502,712	\$ 365,682
---------------------------	-------------------	-------------------

“Nature is cool.” ~ Student, Iona College Step Program, New York

Financial Reports

Statement of Cash Flows

Cash Flows from Operating Activities:

Increase (Decrease) in net assets \$ (26,525) \$(137,030)

Adjustment to reconcile increase (decrease) in net assets to net cash provided (used) by operating activities:

Depreciation 62,437 64,873

Unrestricted non-cash contribution --- (8,248)

(Gain) loss on disposal of equipment (7,850) ---

Interest charges applied to line of credit (211) ---

Unrealized loss (gain) on investments (575) (1,589)

Change in accounts receivable (19,225) 26,857

Change in prepaid expenses 17,201 (809)

Change in inventory (2,043) (723)

Change in accounts payable (8,981) (19,205)

Change in accrued wages 5,194 (21,524)

Change in accrued expenses --- 31,000

Change in deferred revenue 26,159 26,793

**Net Cash Provided by (Used in)
Operating Activities**

45,581

(51,678)



“This trip was a good use of money.” ~ Student, Belmont Charter School, Philadelphia, PA

2012

2011-12

570-828-2319

538 Emery Rd, Dingmans Ferry, PA 18328

peec@peec.org

www.peec.org



PEEC

**Pocono Environmental
Education Center**

PEEC IS CLOSE TO HOME

Where Learning comes Naturally